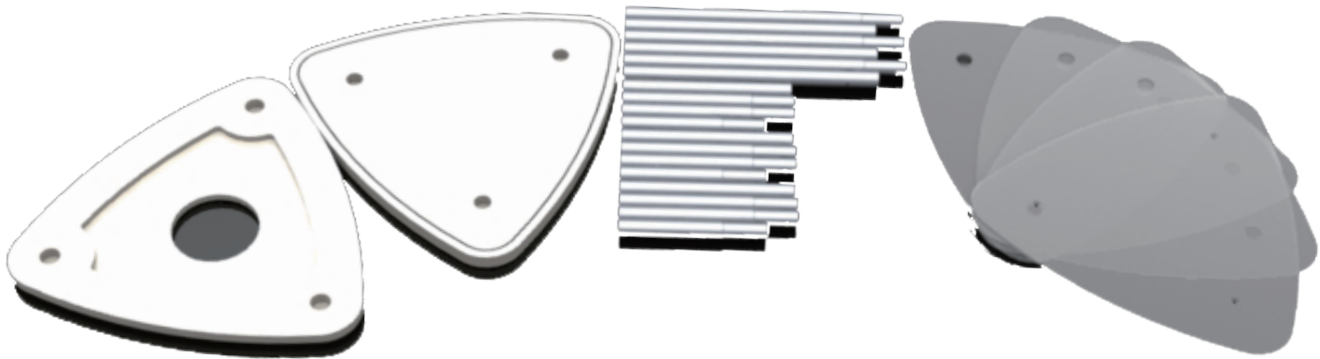


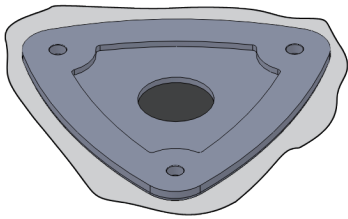
Triangle Counter

ACCESSORIES



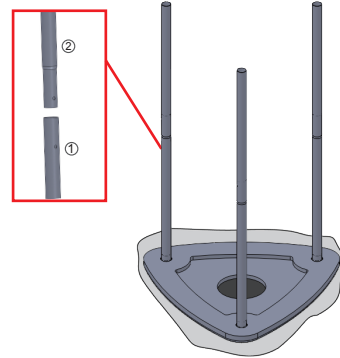
HOW TO INSTALL

①



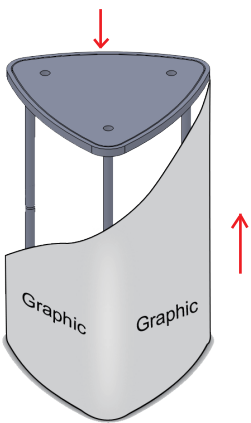
Put the base inside the graphic

②



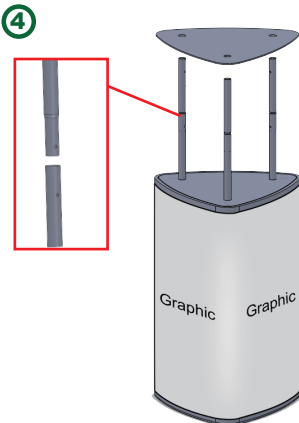
Connect the Pipe #1 and #2, inserting them into the slots in base

③



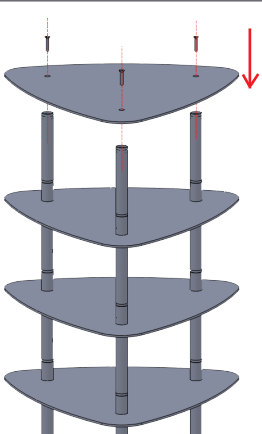
Put the table top on it, and pull on the graphic.

④



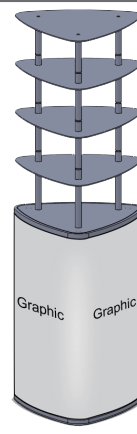
Connect the Pipe #3 and #4 on the table top and then put on the shelf, repeating this until the 4th layer.

⑤



Install the screw on the Pipe #6 and the last layer

⑥



Completed